

Designed for packet decoding and network diagnosis, Packet Analyzer Capsa monitors the network traffic transmitted over a local host and a local network, helping network administrators troubleshoot network problems. With the ability of real time packet capture and accurate data analysis, Packet Analyzer Capsa makes your network transparent before you, letting you quickly and efficiently fix the network troubles.

Packet Analyzer Capsa supports monitoring multiple adapters (enterprise edition only), letting you view the traffic passing through your network via different adapters.

Advanced analyzers provide more detailed information about network traffic, allowing you to view the analyzed data of email messages, FTP transfers, HTTP requests and DNS analysis.

Simple filters and advanced filters can narrow the target hosts, letting you quickly focus on suspect traffic and identify the source of network troubles.

Statistics and graphs let you view network communications in various ways, bring you an overall and visual impression of your network.

Diagnoses list network diagnosis events and provide possible reasons and solutions.

Matrix shows you visualizing network traffic between network nodes in real time.

Reports view provides real time statistic reports of global network or specific groups.

Flexible and intuitive interface is the outstanding feature of Packet Analyzer Capsa, you can easily switch from an overall statistics to the details of a specific network node, even a rookie user can manage it efficiently in a few moments.

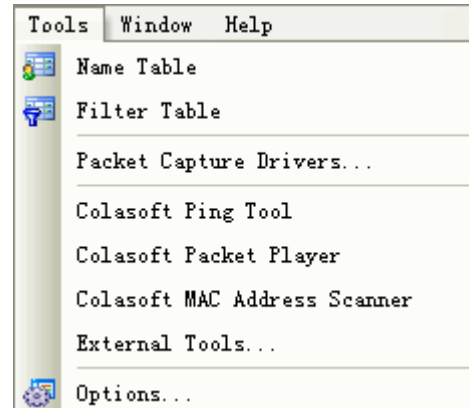
Minimum requirements:

- P3 500 CPU
- 256 MB RAM
- Windows 2000 (SP 4 or later), Windows XP (SP 1 or later), Windows 2003 and Windows Vista
- Explorer 5.5 or higher

Features

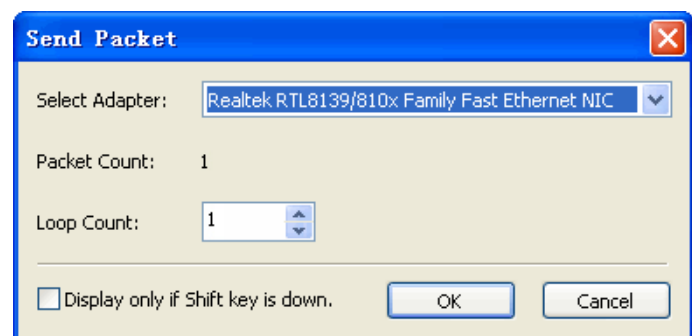
Tools

Packet Analyzer Capsa provides three tools for users, including Cping, Cmac and PktPlayer. In addition, you can customize the tools or applications invoke from Packet Analyzer Capsa.



Send packet

The send packet tool in Packet Analyzer Capsa let users to send the captured packets quickly. Users can select one or more packets and define sending parameters, such as the adapter which packets sending from if there are more than one on machine and loops times. A dialog will display the reply of whether the execution is successful.



Flexible Project Explorer

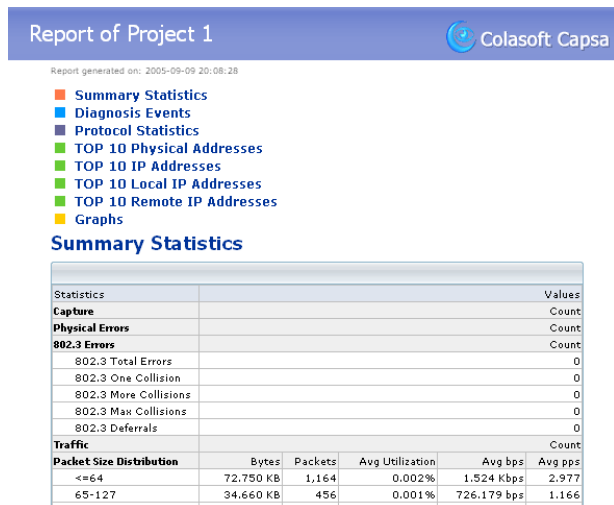
Includes protocol explorer group, physical explorer group and IP explorer group, letting you view the current status of each node and quickly switch among global statistics and the details of specific network nodes.

Project Status

Offers the general statistic information of filters, error packets, captured packets, buffer usage and more.

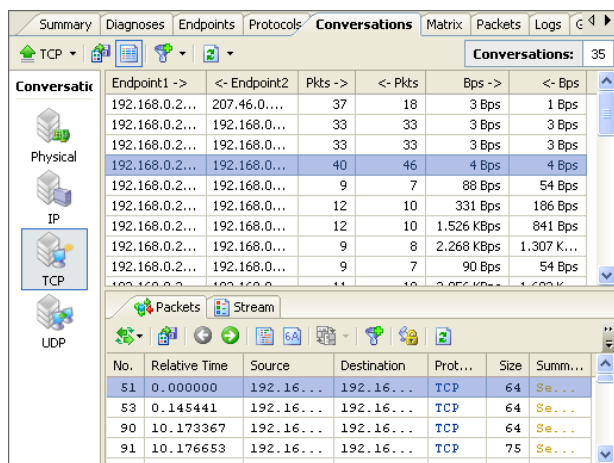
Reports view

A report contains the statistic information of summary statistics, diagnosis events, protocol statistics, top 10 IP protocol and top 10 address, and all available graphs with the current settings.



Conversations view

The Conversations view dynamically presents the real-time status of Physical, IP, TCP and UDP conversations between pairs of endpoints, the sub-views offer the related packets and reconstructed stream the active conversation.



Analysis Logs

Presents the records of network communications analyzed by advanced analyzers, including email messages log, FTP transfers log, HTTP requests log and DNS analysis log.

TCP Reconstruction

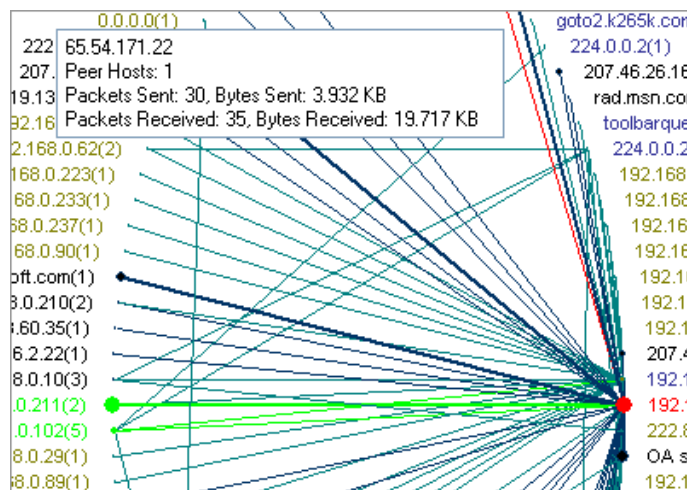
Provides the real-time reconstruction of TCP streams.

Email Messages Reconstruction

The contents of captured emails can be analyzed and reconstructed by the advanced email analyzer.

Matrix view

This view includes individual tools to customize the display types of network traffic, lets you quickly create a picture of all the traffic or sending/receiving traffic.



Protocols Statistics

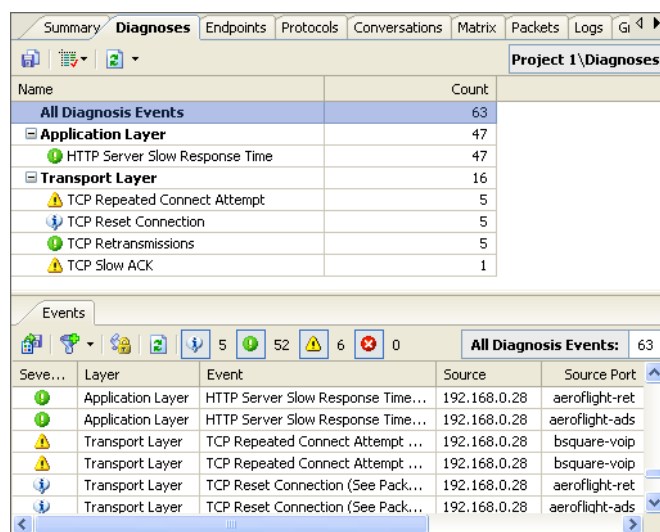
Packet Analyzer Capsa provides the statistics of protocols and sub-protocols used by network communications.

Endpoints Statistics

Packet Analyzer Capsa presents the detailed communication statistics of each network endpoint, data is displayed in both percentage and value.

Expert Network Diagnosis Module

From the Diagnoses view, you are not only able to see the event count by network layer, but also know event-related information such as source, destination, packet number, etc.

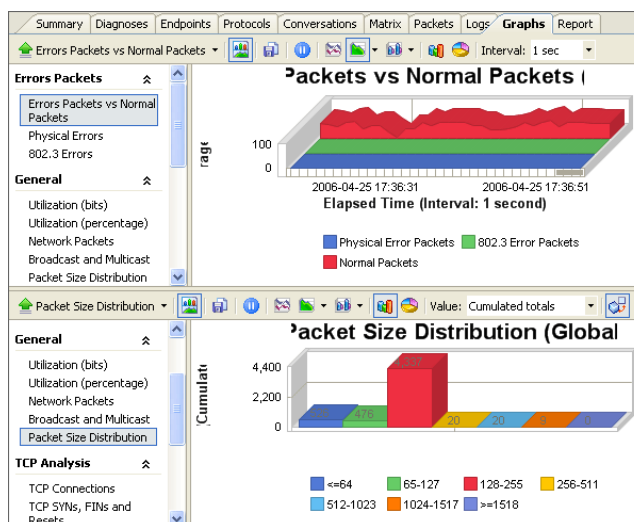


Statistic Reports

Save global or specific groups' statistic reports, containing the information of summary, protocols, top 10 addresses and all available graphs.

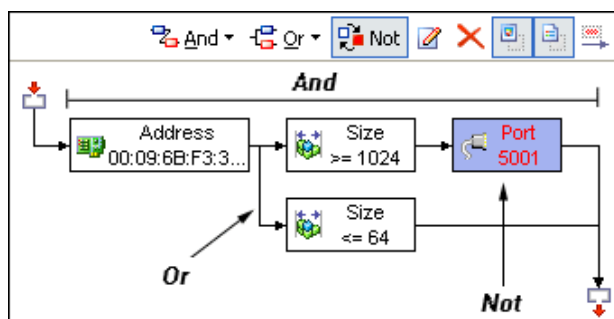
Graphs

Graphically display the statistic information of global network or specific network nodes, providing multiple charts and display options. The unique compare mode lets you view two different graphs simultaneously.



Graphic packet filter interface

Capsa graphically displays project filters, you can easily accept, reject a filter or change its status. The flexibility of Packet Analyzer Capsa lets you accept some filters and at the same time reject some others: the packets matching the Accept filters will be analyzed and the packets matching the Reject filters will be discarded.



Statistics of Network Utilization

Packet Analyzer Capsa offers the statistics of network utilization both in percentage and graphic way.

Project-based Analysis

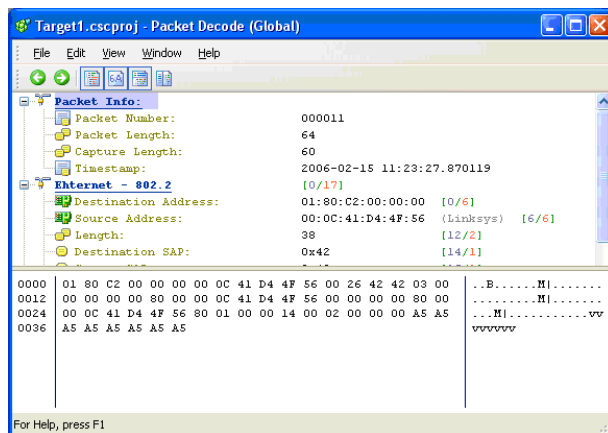
Packet Analyzer Capsa captures network traffic and analyzes packets based on the project settings defined, each project has its own adapters, filters, analyzers and decoders.

Advanced Filters

In addition to make simple filters by address, port and protocol, the advanced filters in Packet Analyzer Capsa also allow you to create packet value filters, packet size filters and packet pattern filters based on the logical rules of And, Or and Not.

Real-time Packet Decoding

Instantly decodes captured packets and displays detailed decode information in Hex, ASCII or EBCDIC format.



Summary Statistics

Packet Analyzer Capsa provides general statistic information, including start date/time, physical errors, 802.3 errors, traffic, packet size distribution, and many other statistics analyzed by multiple analyzers.

The screenshot shows the "Summary" window in Packet Analyzer Capsa, displaying a table of network statistics for "Project 1/Summary". The table includes sections for Capture, Physical Errors, 802.3 Errors, Traffic, Packet Size Distribution, and TCP Packets. The columns are Bytes, Bits, Packets, Utilization, Bps, and pps.

Section	Item	Bytes	Bits	Packets	Utilization	Bps	pps
Capture	Total Traffic	18.120 KB	148.440...	177	0.001%	64 Bps	512 bps
	Broadcast Traffic Sent	3.185 KB	26.088 KB	27	0.000%	0 Bps	0 bps
	Multicast Traffic Sent	0 B	0 b	0	0.000%	0 Bps	0 bps
Packet Size Distribution	<=64	7.563 KB	61.952 Kb	121	0.001%	64 Bps	512 bps
	65-127	2.700 KB	22.120 Kb	29	0.000%	0 Bps	0 bps
	128-255	3.498 KB	28.656 Kb	19	0.000%	0 Bps	0 bps
	256-511	1.906 KB	15.616 Kb	6	0.000%	0 Bps	0 bps
	512-1023	0 B	0 b	0	0.000%	0 Bps	0 bps
	1024-1517	2.453 KB	20.096 Kb	2	0.000%	0 Bps	0 bps
	>=1518	0 B	0 b	0	0.000%	0 Bps	0 bps
TCP Packets	TCP SYN Packets	396 B	3.168 kb	6	0.000%	0 Bps	0 bps
	TCP FIN Packets	256 B	2.048 Kb	4	0.000%	0 Bps	0 bps

Logging FTP Transfers

The advanced FTP analyzer logs the FTP uploads and downloads.

Logging HTTP Requests

The advanced HTTP analyzer logs the HTTP requests in your network.

Logging DNS Analysis

The advanced DNS analyzer logs the DNS requests and replies.

Log files

Packet Analyzer Capsa can generate single log file or split log files for the results analyzed by advanced analyzers.

High Resolution Timestamp

Packet Analyzer Capsa captures and decodes packets by using a high-resolution time stamp (microsecond).

MSDI interface

Provides multiple windows, enabling you to switch among multiple project views conveniently and easily.

Summary Snapshots

As a means to protect data, the summary snapshots represent the network state and are helpful for future network analysis.

Name Table

You can create alias for IP addresses, physical addresses or TCP-UDP ports, resolve IP addresses or host name, set color, and do many other operations in the name table.

Multiple projects capture

You can open multiple projects to capture packets on a single adapter simultaneously, or on different adapters separately.

Multiple Adapters Capture

It is available for Packet Analyzer Capsa to capture network traffic on multiple adapters simultaneously.

Loopback IP Packets

Packet Analyzer Capsa can capture the IP packets sent/received within the local host.

Accept Filters & Reject Filters

The flexible filters in Packet Analyzer Capsa allow you accept some and at the same time reject some other filters.

Importing & Exporting Filters

The filters in Packet Analyzer Capsa can be imported from a file, or exported to file for a future use.

Automatically saving packet files

After you enable the auto save feature and predefine a location in the Project Setting - General page, Packet Analyzer Capsa will automatically save packets to a single file or split files.

Making Filters

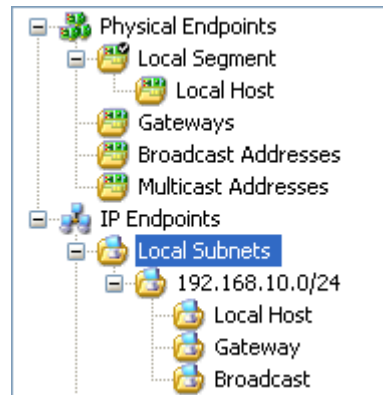
Filters can be made by the captured items from various tab views.

List Column Options

The list columns in tab views are available for customization, you can select the columns to show or change a column's position.

Auto-detecting Network Configuration

Packet Analyzer Capsa can automatically detect your network configuration.



Packet Summary

Every captured packet can be summarized by IP protocols, TCP/UDP protocols or the available uppermost protocols.

Packet Comments

Every captured packet can be added with a comment and marked with a comment icon.

Highlighting packets

The packets selected can be highlighted, letting you easily recognize them among a mass of packets.

Hiding Packets

You can hide some undesired packets to get a clearer view.

Importing & Exporting Packets

Packet Analyzer Capsa supports to import packets from and export packets to the files in .cpf (the previous version of Packet Analyzer Capsa) .cscpkt (Packet Analyzer Capsa 5.0), .cap (Sniffer packets), .pkt (EtherPeek / TokenPeek / AiroPeek) and .dmp (TCP DUMP) format.

Finding an item

With the new feature of Packet Analyzer Capsa, now you can easily find a specific item in the Project Explorer dock window, Endpoints view, Protocols view, Packets view, Connections view, Stream view and Logs view.

Importing & Exporting Network Profile

Your network profile can be customized and exported, you may also import the network profile from a saved file.

Locating Explorer Nodes

IP nodes, physical nodes and protocol nodes can be located in the project explorer from a tab view, which lets you easily view more

Print and Print Preview

You can print the data selected and have a preview for the print effect before printing.

Selecting related packets

Related packets can be selected by address, port or protocol.

Command Line Parameters

Packet Analyzer Capsa can be invoked by command line parameters.

Customizable Menubar & Toolbar

The menubar and toolbar can be customized, you can add or remove buttons and change the position of the toolbar.



Javvin Technologies Inc. Packet Analyzer Capsa Distributor. WWW.JAVVIN.COM

13485 Old Oak Way, Saratoga CA 95070 USA

Tel: 1-408-872-3881; EMAIL: help@javvin.com

CAPSA is a Colasoft product.